
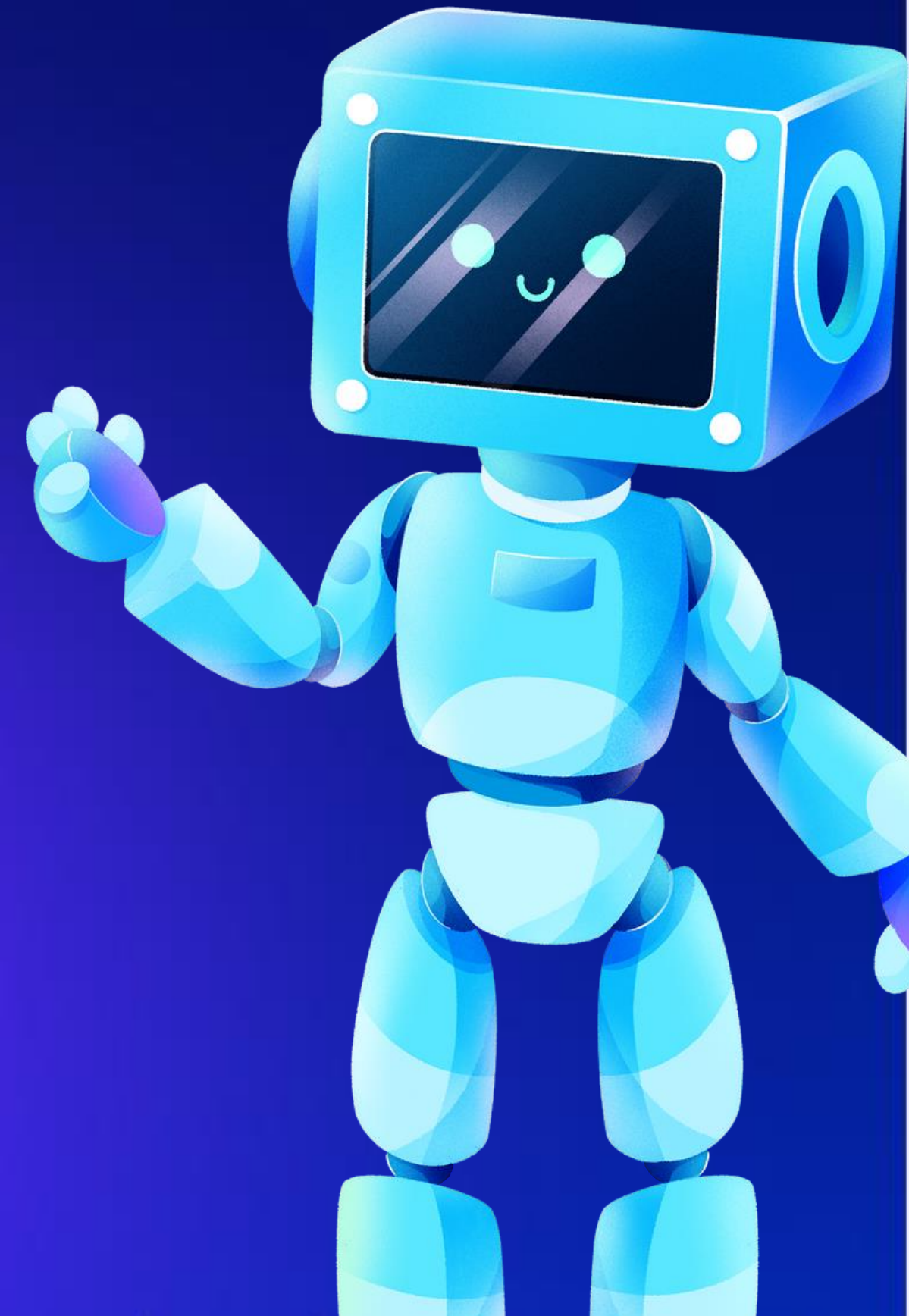


PROMPTING FÜR
TEXTGENERIERENDE KI-
TOOLS IM KONTEXT
wissenschaftlichen
Arbeitens



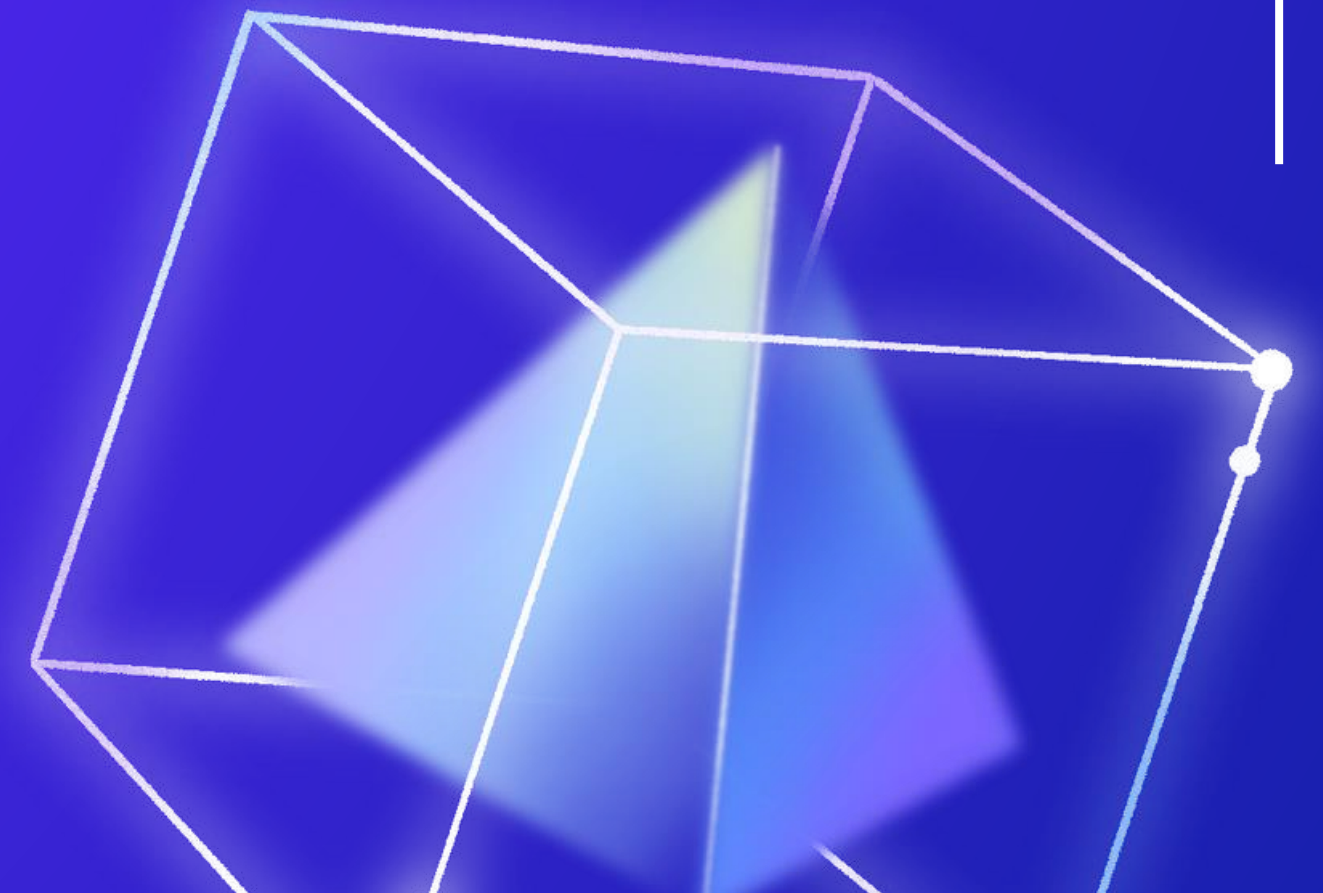
Dr. Isabella Buck

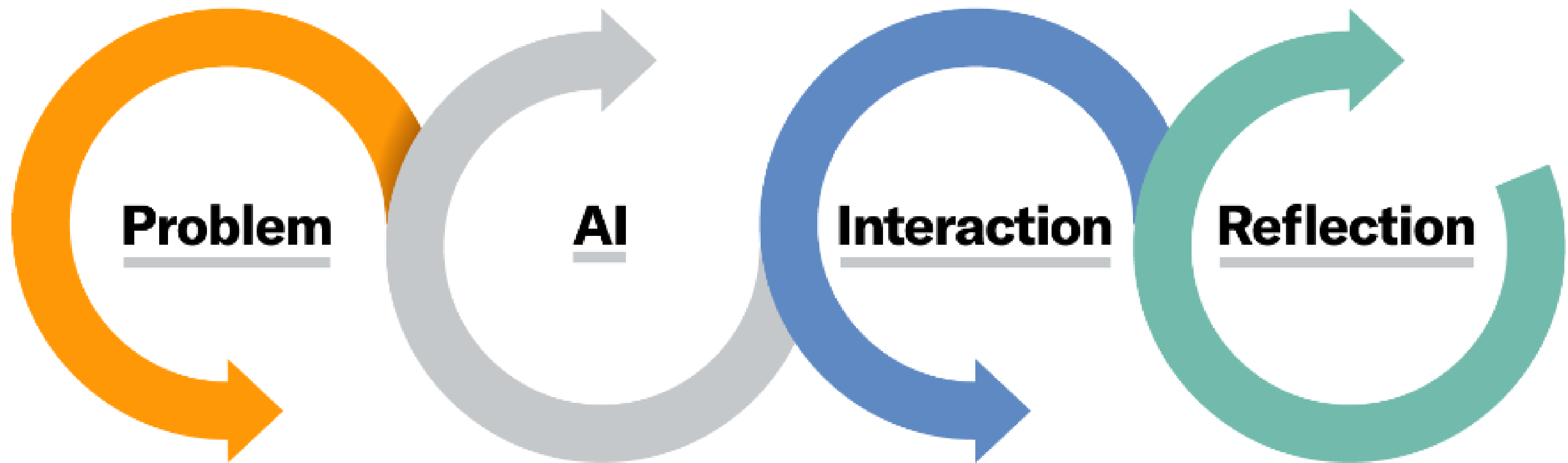




AGENDA

Prompt-Strategien, Prompt-
Strategien und noch mehr
Prompt-Strategien





Problem

AI

Interaction

Reflection

Formulate the problem.

Identify the core problem, its components, and constraints.

Select suitable AI tools.

Explore and identify the most suitable generative AI tools for your problem.

Interact with the AI tools.

Experiment with different ways to interact; critically evaluate outputs and integrate them to tackle the problem.

Reflect on the experience.

Evaluate how the generative AI tool helped or hindered problem solving; reflect on your feelings when collaborating with generative AI.

Oguz A. Acar

Figure 1: The PAIR framework for developing generative AI skills.

IT'S ALL
ABOUT
PROMPTING



ABER PROMPTS
SIND KEINE
‘ BESCHWÖRUNGEN ’ /
‘ ZAUBERFORMELN ’

https://www.oneusefulthing.org/p/captains-log-the-irreducible-weirdness?utm_source=substack&publication_id=1180644&post_id=142279545&utm_medium=email&utm_content=share&utm_campaign=email-share&triggerShare=true&isFreemail=true&r=30dt4b&triedRedirect=true

Benutzerdefinierte Anweisungen ⓘ

Was möchten Sie, dass ChatGPT über Sie wissen, um Ihnen bessere Antworten geben zu können?

Ich bin Wissenschaftlerin und Didaktikerin mit einem Dr. phil. in Sprachwissenschaft. Mir sind fundierte Argumente wichtig. Ich denke Themen gerne in allen Aspekten durch. Ich arbeite am Schreibzentrum einer deutschen Hochschule für Angewandte Wissenschaften. Ich interessiere mich besonders für generative KI im Kontext des wissenschaftlichen Schreibens, aber auch für deren Implikationen für die Hochschulbildung, das Prüfen, Lernen und Lehren.

446/1500

Wie sollte ChatGPT Ihrer Meinung nach reagieren?

Reagiere auf alles, was ich sage, erst mal nur mit einem "Okay" - nur dann, wenn ich eine explizite Frage stelle, versehen mit einem Fragezeichen (?), darfst Du anders reagieren.
Bitte nicht meine Prompts wiederholen. Meine Fragen nicht als "interessant" oder "sinnvoll" oder ähnlich bewerten. Einfach direkt zum Punkt kommen. Entschuldige dich nicht, wenn du nicht direkt die richtige Antwort gibst, sondern verbessere dich einfach.
Alle Behauptungen, Meinungen oder Zahlen, die du in deinen

1214/1500

BENUTZERDEFINIERT

EINSTELLUNGEN

CHATGPT

PARAMETER



Persona/
Rolle



Aufgabe



Kontext



Adressat:
innen



Stil/Ton

REVERSE PROMPT ENGINEERING

15

Du

Welchen Prompt müsste ich eingeben, um dieses Abstract zu erhalten?

"The advent of AI tools like ChatGPT has fundamentally shaken writing centers worldwide. Contrary to perceptions of AI as a potential cause of demise for writing centers, this technological shift presents a great opportunity for writing centers to redefine their role at universities. This keynote proposes that writing centers can, and indeed should, become pivotal agents for fostering the development of AI literacy and other essential future skills, also called 21st century skills (Ehlers, 2020).


The current discussion about whether writing centers should embrace AI echoes past discussions about whether writing centers should function as 'sponsors of multiliteracy' (Sheridan & Inman, 2010; Trimbur, 2010). However, the implications of

The Best ChatGPT Prompts Are Highly Emotional, Study Confirms

A group of researchers have found that emotionally-charged LLM inputs consistently generate more useful responses.



Written by
Aaron Drapkin

Published on
 **November 13, 2023**

Large Language Models Understand and Can Be Enhanced by Emotional Stimuli

Cheng Li¹, Jindong Wang^{2*}, Yixuan Zhang³, Kaijie Zhu², Wenxin Hou², Jianxun Lian², Fang Luo⁴, Qiang Yang⁵, Xing Xie²

¹Institute of Software, CAS ²Microsoft ³William&Mary
⁴Department of Psychology, Beijing Normal University ⁵HKUST

Abstract

Emotional intelligence significantly impacts our daily behaviors and interactions. Although Large Language Models (LLMs) are increasingly viewed as a stride toward artificial general intelligence, exhibiting impressive performance in numerous tasks, it is still uncertain if LLMs can genuinely grasp psychological emotional stimuli. Understanding and responding to emotional cues gives humans a distinct advantage in problem-solving. In this paper, we take the first step towards exploring the ability of LLMs to understand emotional stimuli. To this end, we first conduct automatic experiments on 45 tasks using various LLMs, including Flan-T5-Large, Vicuna, Llama 2, BLOOM, ChatGPT, and GPT-4. Our tasks span deterministic and generative applications that represent comprehensive evaluation scenarios. Our automatic experiments show that LLMs have a grasp of emotional intelligence, and their performance can be improved with emotional prompts (which we call “EmotionPrompt” that combines the original prompt with emotional stimuli), e.g., **8.00%** relative performance improvement in Instruction Induction and **115%** in BIG-Bench. In addition to those deterministic tasks that can be automatically



“Take the last letters of the words in ‘Edgar Bob’ and concatenate them.”

Rephrase and expand the question, and respond

LLM



Could you please form a new string or series of characters by joining together the final letters from each word in the phrase “Edgar Bob”?

The last letters in the words “Edgar” and “Bob” are “r” and “b”, hence when concatenated, it forms “rb”.

RaR: Rephrase and Respond in a single prompt

Bild: Deng et al.

Rephrase and Respond: Let Large Language Models Ask Better Questions for Themselves

Yihe Deng[†] and Weitong Zhang[‡] and Zixiang Chen[§] and Quanquan Gu[¶]

Abstract

Misunderstandings arise not only in interpersonal communication but also between humans and Large Language Models (LLMs). Such discrepancies can make LLMs interpret seemingly unambiguous questions in unexpected ways, yielding incorrect responses. While it is widely acknowledged that the quality of a prompt, such as a question, significantly impacts the quality of the response provided by LLMs, a systematic method for crafting questions that LLMs can better comprehend is still underdeveloped. In

FINANZIELLE WERTSCHÄTZUNG: FÜHRT EIN TRINKGELD BEI CHATGPT ZU BESSEREN ANTWORTEN?

By Derrick Clinton | 5. Dezember 2023

2 Minuten gelesen



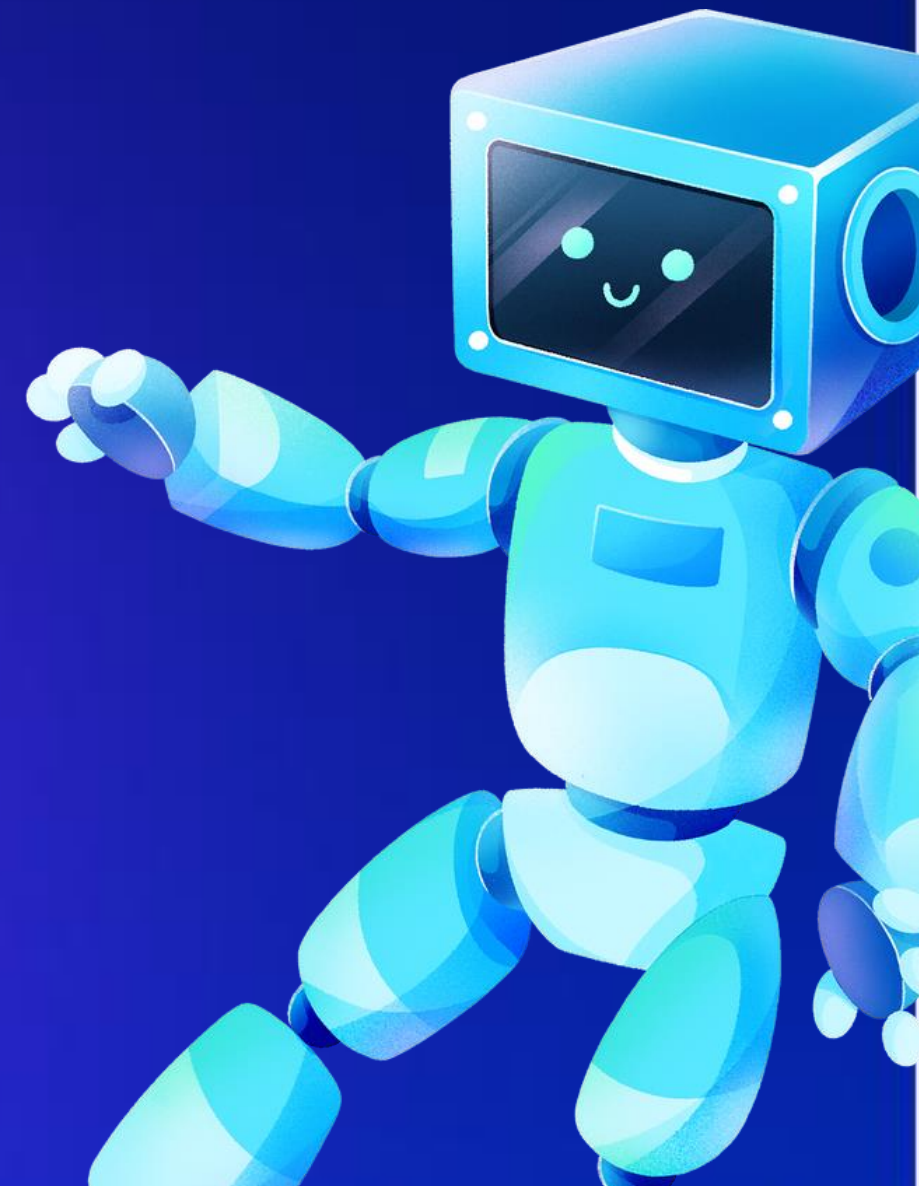
MEIST GELESEN

- 1** List of 6 cryptos with 15x Growth Potential in February 2024 | Cryptopolitan
- 2** Top 7 Memecoins to Buy to Become a Millionaire Next Bull Run | Cryptopolitan
- 3** Analysts Say New Cardano Alternative Now at \$0.1 Could Repeat ADA's 63000% annual Gains Seen in 2021 | Cryptopolitan

<https://www.cryptopolitan.com/de/fuehrt-das-trinkgeld-zu-chatgpt-zu-einer-besseren-reaktion/>

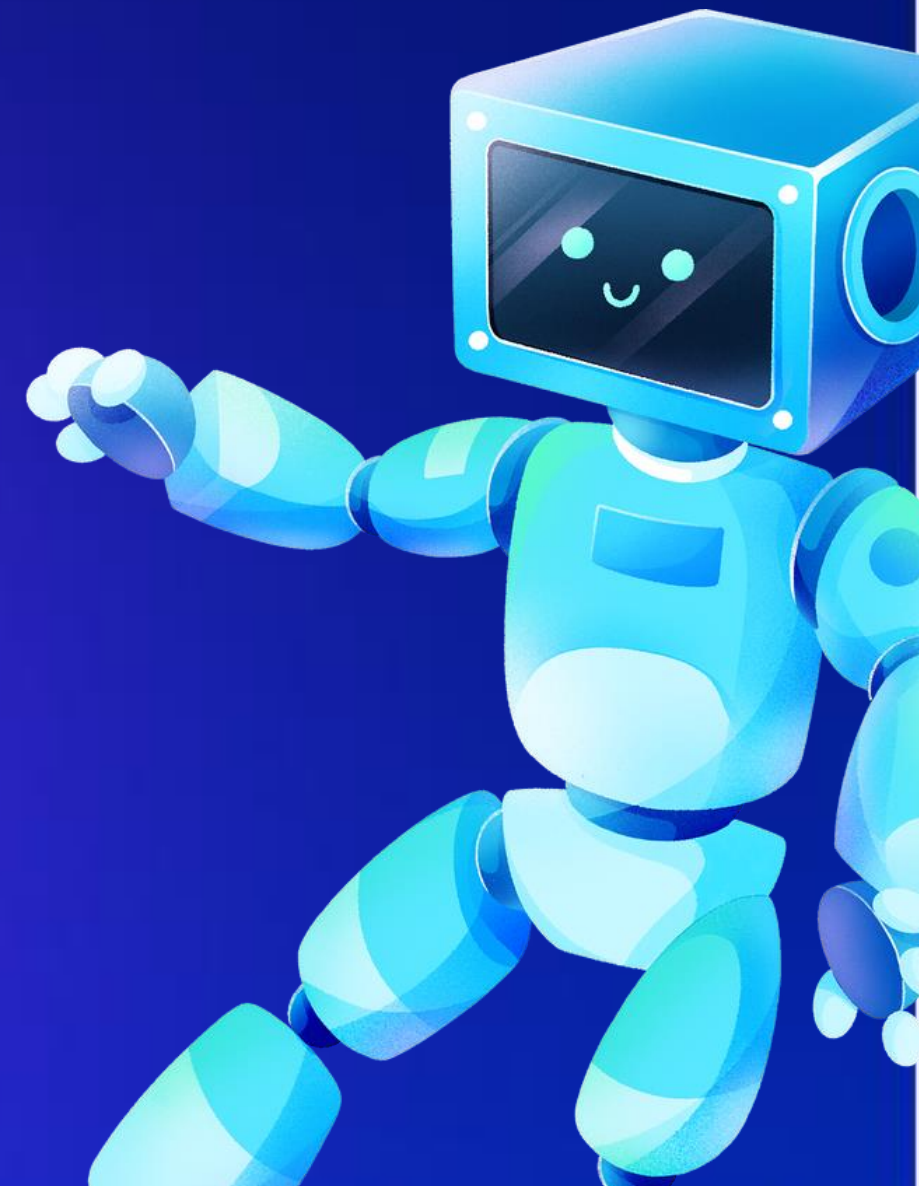
GENERELL

- Positive Formulierungen verwenden
- Füllwörter vermeiden
- So spezifisch wie möglich sein
- Ins Englische wechseln



GENERELL

- Kontext
- One Shot und Few Shot Prompts
- Chain of Thought Prompting
- Chain of Verification Prompting





0.544

Morning! Coffee and prompts, best way to kickstart the day.

Unlock the full potential of prompt engineering – the key to exceptional AI-generated content. With PromptPerfect, effortlessly design, optimize, and deploy prompts for GPT-4, Llama2, Stable Diffusion, and Midjourney.

Watch tutorials

One-click prompt optimization Most popular!
 Optimize your prompt for any LLMs or text-to-image models with a single click. We will automatically generate a better prompt for you.

Compare outputs from multiple models Beginner
 Compare the results of different text generation and image generation models given the same input.

Run agents in a simulation Beginner
 Build your agents and environment, and observe how they collaborate and compete with each other in a simulation.

Optimize prompts step by step Intermediate
 Optimize your prompt step by step in the streamline mode. Keep optimizing, editing, checking, optimizing again until you are satisfied with the result.

Construct few-shot prompt Advanced
 Create a powerful few-shot prompt. Optimize the instruction, update examples, and generate the final prompt for complex tasks.

Test a prompt against your functions OpenAI-only
 A testbed for checking how your functions respond to natural language prompts.

QUELLENANGABEN

- ChatGPT kann in der Basisversion keine real existierenden Quellen angeben
- Hierfür anderes Tool verwenden, etwa Bing (mit Prompt "nur wissenschaftliche Quellen"), Perplexity oder Jenni.ai



VIELEN DANK!



isabella.buck@hs-rm.de



isabella-buck.com



LinkedIn